



www.rismat-floorguard.net
RS201703

Bring the Safe & Clean Floors to you everyday.



Canada branch Facebook Floorguard website YouTube

Add: 6th Floor, No.3333 Changning Road, Changning District, Shanghai, P.R.C.200336
☎ 4008-219-319 / 86-21-31261933

nann

Floor Pollution Control Matting System

SUCCESS PORTFOLIOSSUCCESS PORTFOLIOS

DIRECTORY

- 1/ Floor Pollution Control Matting System
- 3/ Company Introduction
- 4-5/ Customer List
- 6-7/ First Guard
- 8-9/ Walk Off (Viking)
- 10-11/ Flexi Guard 99
- 12-13/ Super Guard
- 14-15/ Comfort / Comsan
- 16-17/ Magic Mat
- 18-19/ Action Mat / Action Mat Plus
- 20-21/ Atrium Plus / Ripple Xtra / Jaguar Xtra
- 22-23/ Cero / Cero Plus
- 24-25/ Armor Easy / Armor Plus
- 26-27/ Rib Mat 3000
- 28-29/ M 4000
- 30-31/ Luxor VIP Mat / VIP Mat
- 32-33/ Logo Mat / Banner Mat
- 34-35/ Magic Mat (residential)
- 36-37/ Bath Mat
- 38-39/ Urinal Mat
- 40-41/ Anti-Fatigue Rubber Mat
- 42-43/ Hex Guard
- 44-45/ Slip Guard



FloorGuard Matting Manufacturing is a wholly-owned subsidiary of RISMAT Group which established in Shanghai in 2011.

As a fully automatic modern factory, FloorGuard presently employs only around 40 full time staff, however the production capacity value can reach over 200 million yuan per year. The factory covers an area of 6,400 square meter and consists of tufting, prepping, manufacturing, packaging, warehousing as well as office and QC space for support staff.

Main major matting product manufactured at this location consists of cotton, nylon, polypropylene, polyester, and rubber.

Floor Pollution Control Matting System

Up to 80% of dirt in commercial and building place is carried in by pedestrian traffic. Floorings are the most abused element in any facility. On hard floors abrasive dirt particles scrape and damage the surface. The foot traffic of 1,500 people can remove 42% of the floor's finish, and 95% of all carpet appearance problems are caused by soil and traffic patterns. Rismat has developed a new range of products, offering a complete solution to all flooring problems.

Rismat's Floor Pollution Control Matting System is a designed to prevent dirt and dust from entering our premises by uncontrolled foot traffic. Instead of cleaning up foot traffic messes by using more staff, using up more water resources, and dumping more chemicals into our rivers and oceans, by adapting our method, you can greatly help the environment and at the same time achieve considerable cost savings while increasing profitability. With the Floor Pollution Control System, you can reduce labor and material resources.



Company Introduction

RISMAT, an eco-matting solution company was established in 1993 in Hong Kong and entered into Shanghai, China in 1994.

We have developed the two new concepts in the past two decades:

Floor Pollution Control System
Occupational Health & Safety System

In 2011, RISMAT Canada Branch Office was established in Toronto, and FloorGuard Manufacture Center was established in Shanghai.

Our eco-matting products can be used at a variety of floor conditions such as high-end hotels, commercial & residential properties, factories, schools, hospitals & research labs and other public areas.

FloorGuard's eco-matting products include commercial high-end advertising/logo mats, industrial heavy-duty mats, to automobile trendy mats, and to residential/home green eco-mats.



Bring the Safe & Clean Floors to you everyday.

Customer List (Hotel)



The listed above in a random order

Customer List (Property)



The listed above in a random order



First Guard

First Guard is kind of our high traffic mats. This modular, multi-purpose flooring tile product is frequently installed as an anti-slip door mat also applied to a variety of other industrial or commercial tasks. First Guard can be surface mounted by using our unique edging system. An optional border is also available for those desiring it. It's great for all seasons and is easy to maintain through periodic washing with a hose or pressure washer. First Guard is your ideal outdoor door mat which performs well on primary scrub and your first defense against floor pollution.

Features

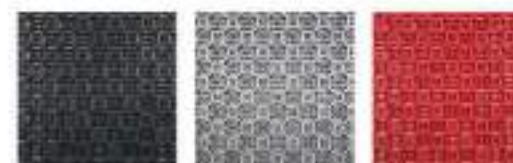
- Molded from a durable, UV resistant PVC compound.
- Modular design allows quick replacement of worn out tiles.
- Overlapping heel-safe parallel circle design incorporates resilient scrapers making it highly effective at trapping dirt and debris.
- Flow-through parallel circle structure, combined with the recessed grooves, facilitates unrestricted water drainage.
- Designed for heavy foot traffic and is intended for areas that require additional drainage capability.

Applications

- Best suited as your primary defense outside of public buildings, shopping malls, schools, hospitals, entertainment venues, etc.
- It is an excellent outdoor mat solution where a durable and lightweight mat is required.

TECHNICAL SPECIFICATIONS

Material : UV resistant PVC	Weight : Approx.4.5kg/m ²
Thickness : Approx.9mm	Temp resistance : -30°C up to +50°C
Tile size : 20cm x 20cm	Size in use : 19.25cm x 19.25cm
Fire resistance : GB 8624-2012,GB/T 11785-2005,GB/T 8626-2007,B1	



● Graphite ● Silver ● Red



Accessory: Rubber linear border (3cm)

Suitable for laying areas : Hallway, Open-air corridor, Open-air balcony,
Tea room, Outside the gate



Walk off (Viking)

Walk Off (or called Viking) is our modular, premium flooring tile product. It is primarily installed as an outdoor matting system but it can also be fitted in mat wells. Walk Off can be surface mounted by using our unique border edging system. It's great for all seasons and is easy to maintain through periodic washing with a hose or pressure washer. Ideally used as a primary scrub mat, Walk Off is your first defense against floor pollution.

Features

- Molded from a durable, UV resistant PVC compound with coarse polyamide brush inserts.
- Modular design allows quick replacement of worn out tiles.
- Special surface scrapper and brush textile provide superior scrubbing action to effectively remove coarse dirt and debris.
- This entrance mat is designed for medium to heavy foot traffic.

Applications

- Best suited as your primary defense outside of hotels, public buildings, shopping malls, entertainment venues, etc.
- It is an excellent outdoor mat solution where a durable and lightweight mat is required.

TECHNICAL SPECIFICATIONS

Yarn type : Polyamide 6.6 monofilaments & Special polypropylene monofilament

Pile construction : High twist and heat set-tufted cut pile

Backing : UV resistant PVC

Tile weight : Approx.8kg/m² (Walk Off)

Tile weight : Approx.9.25kg/m² (Walk Off Plus)

Tile size : 20cm x 20cm

Temp resistance : -30°C up to +50°C

Fire resistance : GB 8624-2012,GB/T 11785-2005,GB/T 8625-2007,B1

Thickness : Approx.12mm (Walk Off)

Thickness : Approx.16mm (Walk Off Plus)

Size in use : 19.5cm x 19.5cm



● Graphite ● Red ● Hard yarn



Modular tile
Accessory: modular linear edge
Accessory: modular corner edge

Suitable for laying areas : Corridor, Open-air balcony, Outside



Flexi Guard 99

Flexi Guard 99 is one of our high traffic door mats. It provides an innovative combination of a revolutionary matting system which prevents up to 85% of walked-in dust and grit. This modular, premium flooring tile product is primarily installed as an entrance door mat but it can also be fitted in mat wells. The special surface scraper and brush textile removes coarse dirt effectively from shoe soles. It's great for all seasons and is easy to maintain through periodic washing with a hose or pressure washer. Ideally used as traffic mats.

Features

- Molded from a durable, UV resistant PVC compound with coarse polyamide brush inserts.
- The carpet surface is removable and can be changed arbitrarily.
- The ability to create different design combinations enhances your unique look yet is easy to install.
- Special surface scraper and brush textile provide superior scrubbing action to effectively remove coarse dirt and debris.
- This premium entrance mat is designed for heavy foot traffic.

Applications

- Best suited as your primary defense outside of hotels, public buildings, shopping malls, entertainment venues, etc.
- It is an excellent outdoor mat solution where a durable and lightweight mat is required.

TECHNICAL SPECIFICATIONS

9901/9903

Yarn type : Antistatic polyamide 6.6
Pile construction : High twist and heat set-tufted cut pile
9903 tile weight : Approx.10kg/m²
9903 tile thickness : Approx.16mm
9901 tile weight : Approx.10kg/m²
9901 tile thickness : Approx.16mm

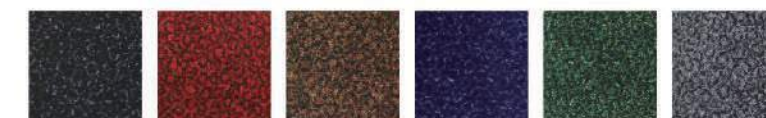
9900

Material : UV resistant PVC
9900 tile weight : Approx.8.8kg/m²
9900 tile thickness : Approx.16mm

Tile size : 20cm x 20cm Size in use : 19.25cm x 19.25cm
Fire resistance : GB 8624-2012,GB/T 11785-2005,GB/T 8626-2007,B1.



● Graphite ● Silver ● Gold



● Charcoal ● Red ● Brown ● Blue ● Green ● Ash



Modular tile
accessory modular linear edge
accessory modular corner edge
accessory modular connecting pin

Suitable for laying areas : Hallway, Aisle, Outside



Super Guard

Super Guard is our enhanced, modular PVC floor mat. It is frequently installed as a scraper mat where aggressive scraping tines are required. Used as an outdoor entrance mat or fitted in mat wells, it can also be used for a variety of other recreational, industrial or commercial tasks. Super Guard can be surface mounted by using our unique edging system. It's great for all seasons and is easy to maintain through periodic washing with a hose or pressure washer. Ideally used as a snow scraper mat, Super Guard is your first defense against floor pollution.

Features

- Molded from a durable, UV resistant PVC compound.
- Modular design allows quick replacement of worn out tiles.
- Enhanced parallel circle design of Super Guard incorporates aggressive scrapers making the product highly effective at scrubbing and trapping dirt and debris.
- Flow-through structure, combined with the recessed grooves, facilitates unrestricted water drainage.
- Designed for extreme weather and medium to heavy foot traffic.

Applications

- Best suited as your primary defense outside of schools, sports camps, ski resorts, stables, golf courses, recreational facilities, etc.
- It is an excellent outdoor mat solution where a durable and rugged mat is required.

TECHNICAL SPECIFICATIONS

Material: UV resistant PVC

Thickness: Approx. 17.5 mm

Tile size: 20 cm x 20 cm

Temp resistance: -25°C up to +50°C

Fire resistance: GB 8624-2012, GB/T 11785-2005, GB/T 8626-2007, B1

Weight: Approx. 7.3 kg/m²

Size in use: 19.25 cm x 19.25 cm



● Graphite

Suitable for laying areas : Hallway, Aisle, Outside



Modular tile

Accessory: modular linear edge

Accessory: modular corner edge



Comfort / Comsan

Designed for easy installation, this high technology modular tile floor mats provides safety and anti-slip functionality. Water will not accumulate on the tiles surface. Bottom seep design allows water to drain according to the slope of the floor base. Easy to clean and maintain, it is suitable for use as pool floor mats at the pool side; and sauna areas as well as in showers and change rooms.

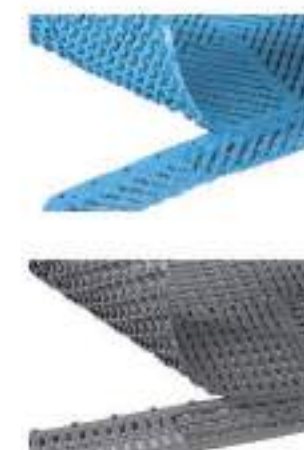
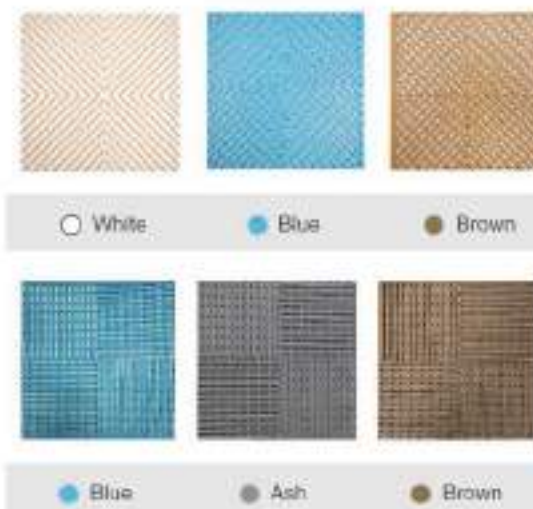
TECHNICAL SPECIFICATIONS

Comfort

Material : Synthetic PVC
Thickness : Approx.9mm
Weight : Approx.3.6kg/m²
Temp resistance : 10°C up to +60°C
Tile size : 30.5cm x 30.5cm
Size in use : 30cm x 30cm
Fire resistance :
GB 8624-2012,GB/T 11785-2005,GB/T 8626-2007,B1

Comsan

Material : Synthetic PVC
Thickness : Approx.9mm
Weight : Approx.3.6kg/m²
Temp resistance : 10°C up to +60°C
Tile size : 30.5cm x 30.5cm
Size in use : 30cm x 30cm
Fire resistance :
GB 8624-2012,GB/T 11785-2005,GB/T 8626-2007,B1



Accessory : modular linear edge

Suitable for laying areas :
Bathroom, Tea room, Shower rooms, Swimming pools



Magic Mat

Magic Mats are our premium line of entrance mats, enhancing the safety and protection of most office and commercial floors. The specially blended cotton/high absorbent fiber yarn can hold many times its own weight in moisture and still function effectively.

Features

- Magic Mats prevent moisture, dirt and grease from being transferred onto your floors, by effectively absorbing and trapping these substances in the mat.
- The mat's low pile height easily fits under most doors and supports quicker drying times.
- As the rubber backed mats it helps reduce the possibility of injuries due to slips and falls.
- Regular vacuuming and periodic cleaning with a light to medium use carpet extractor will ensure your mat's optimal performance and retain the warranty coverage.

Applications

- Best suited for placement in transition areas such as entrances and hallways into; public buildings, shopping malls, schools, hospitals, entertainment venues, manufacturing plants, commercial kitchens, washrooms, etc.

TECHNICAL SPECIFICATIONS

Yarn type : High compound synthetic and natural fiber

Pile construction : Tufted cut pile

Pile weight : Approx.0.99kg/m²

Pile height : Approx.8mm

Roll size : 150cm x 1800cm (Backing : Grease proof synthetic rubber)

Piece size : 90cm x 150cm/120cm x 180cm (Backing : Grease proof synthetic rubber + Gripper)

Indoor air quality testing : Conform to GB 18401-2010 .

Doesn't contain formaldehyde and decomposable carcinogenic aromatic amine dyes.



● Charcoal ● Red ● Dark brown ● Brown ○ Ash ● Blue ● Green

Suitable for laying areas : Inside, Kitchens, Restaurants, Tea room, Washroom



Action Mat / Action Mat Plus

Action Mat and Action Mat Plus are high quality entrance mats that provide consumers with an extremely functional and durable mat at a competitive price. Like our Magic Mat, they can hold many times their own weight in moisture and still function effectively.

Features

- Effectively absorb and trap moisture, dirt and grease.
- The specially formulated PVC backing creates a secure slip resistant base that will not let water leak through to your floor.
- Action Mat Plus also features stiff, monofilament bristles which provide superb scraping action to remove loose dirt and debris from shoe soles.
- Action Mat/Action Mat Plus have a deep pile, giving it a plush, more cushioned feel.

Applications

- Best suited for placement in transition areas in public buildings, shopping malls, schools, hospitals, entertainment venues, manufacturing plants, commercial kitchens, washrooms, etc., anywhere that foot traffic contamination can be transferred from one area to another.

TECHNICAL SPECIFICATIONS

Action Mat

Yarn type : High compound synthetic and natural fiber
Pile construction : Tufted cut pile
Total weight : Approx.3.83kg/m²
Total height : Approx.9mm
Backing : The bottom of the elastic
Roll size : 120cm x 1800cm/200cm x 1800cm
Indoor air quality testing : Conform to GB 18401-2010
Doesn't contain formaldehyde and decomposable carcinogenic aromatic amine dyes

Action Mat Plus

Yarn type : High compound synthetic and natural fiber
Pile construction : Tufted cut pile
Total weight : Approx.3.60kg/m²
Total height : Approx.9mm
Backing : The bottom of the elastic
Roll size : 120cm x 1800cm/200cm x 1800cm
Indoor air quality testing : Conform to GB 18401-2010
Doesn't contain formaldehyde and decomposable carcinogenic aromatic amine dyes



Action Mat



Action Mat Plus

● Graphite

● Red

● Graphite

● Red

Suitable for laying areas : Inside, Kitchen, Restaurants, Tea room, Washroom



Atrium Plus / Ripple Xtra / Jaguar Xtra

The carpet surface of Atrium Plus / Ripple Xtra / Jaguar Xtra is made up of 100% special composite nylon fibers, which can strongly absorb any dirt from the sole. Solution dye craft makes it not easy faded and UV resistant so that great for exterior areas. The anti-slip elastic compound backing helps avoiding accidents. It's suitable for medium to high traffic areas like hotels, shopping malls, business buildings, hospitals, factories, offices, villas and apartments.

TECHNICAL SPECIFICATIONS

Atrium Plus

Yarn type : Polyamide 6.6 monofilaments&Special nylon wire
Pile construction : High twist and heat set combination of mono and multi filaments
Pile construction : Tufted cut pile
Total weight : Approx.3.83kg/m²
Backing : The bottom of the elastic
Thickness : Approx.9mm
Roll size : 200cm x 1800cm
Indoor air quality testing : Conform to GB 18401-2010 , Doesn't contain formaldehyde and decomposable carcinogenic aromatic amine dyes
Color fastness test : GB/T 3921-2008,GB/T 3920-2008, GB/T 8427-2008 , Light fastness : Greater than 6 grade ; Fastness to washing : 4-5grade ; Friction fastness : 4-5grade

Ripple Xtra / Jaguar Xtra

Yarn type : Special nylon composite fiber
Pile construction : Tufted cut pile
Backing : The bottom of the elastic
Pile weight : Approx.1.175kg/m²
Roll size : 200cm x 1800cm
Indoor air quality testing : Conform to GB 18401-2010 ; Doesn't contain formaldehyde and decomposable carcinogenic aromatic amine dyes
Color fastness test : GB/T 3921-2008,GB/T 3920-2008, GB/T 8427-2008 , Light fastness : Greater than 6 grade ; Fastness to washing : 4-5grade ; Friction fastness : 4-5grade



Atrium Plus

● Charcoal ● Red ● Brown ● Ash



Jaguar Xtra



Ripple Xtra

● Charcoal ● Red ● Brown ● Blue ● Green ● Ash

Suitable for laying areas : Hallway, Aisle, Elevator, Outside



Cero / Cero Plus

Cero and Cero Plus are superior entrance matting designed for buildings with high traffic usage. In service for many years, they have proven to stand up to extreme foot traffic. Cero / Cero Plus provide 24/7 protection and superior cleaning properties.

Features

- Cero / Cero Plus effectively absorb and trap moisture, dirt and grease.
- Our nylon/high absorbent fiber yarn provides a durable and robust solution for commercial applications.
- The yarn's long lasting fade resistance maintains the mats' visual appeal while the thick pile provides a plush, cushioned feel underfoot.
- Cero Plus features additional bands of heavy-duty nylon monofilament fibers which provide exceptional scraping ability, facilitating the easy removal of coarse dirt/debris and enhance its durability.
- The specially formulated PVC compound backing provides a secure slip resistant base that will not let moisture leak through to your floor.

Applications

- Designed for prolonged daily use, they are best suited for high traffic areas such as lobbies, public entrances and hallways in hotels, public buildings, malls, hospitals, entertainment venues, etc.
- They are suitable for use as surface cover matting or in shallow mat wells.

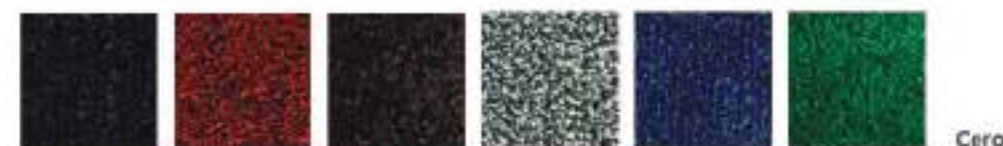
TECHNICAL SPECIFICATIONS

Cero

Yarn type : Polyamide 6
Pile construction : High twist and heat set-tufted cut pile
Backing : The bottom of the elastic
Total thickness : Approx.10mm
Total weight : Approx.3.30kg/m²
Roll size : 200cm x 1800cm
Indoor air quality testing : Conform to GB 18401-2010 ,
Doesn't contain formaldehyde and decomposable carcinogenic aromatic amine dyes

Cero Plus

Yarn type : Polyamide 6.6 monofilaments&PA6 multifilaments
Pile construction : Tufted cut pile in stripes
Backing : The bottom of the elastic
Total thickness : Approx.10mm
Total weight : Approx.4.20kg/m²
Roll size : 200cm x 1800cm
Indoor air quality testing : Conform to GB 18401-2010 ,
Doesn't contain formaldehyde and decomposable carcinogenic aromatic amine dyes

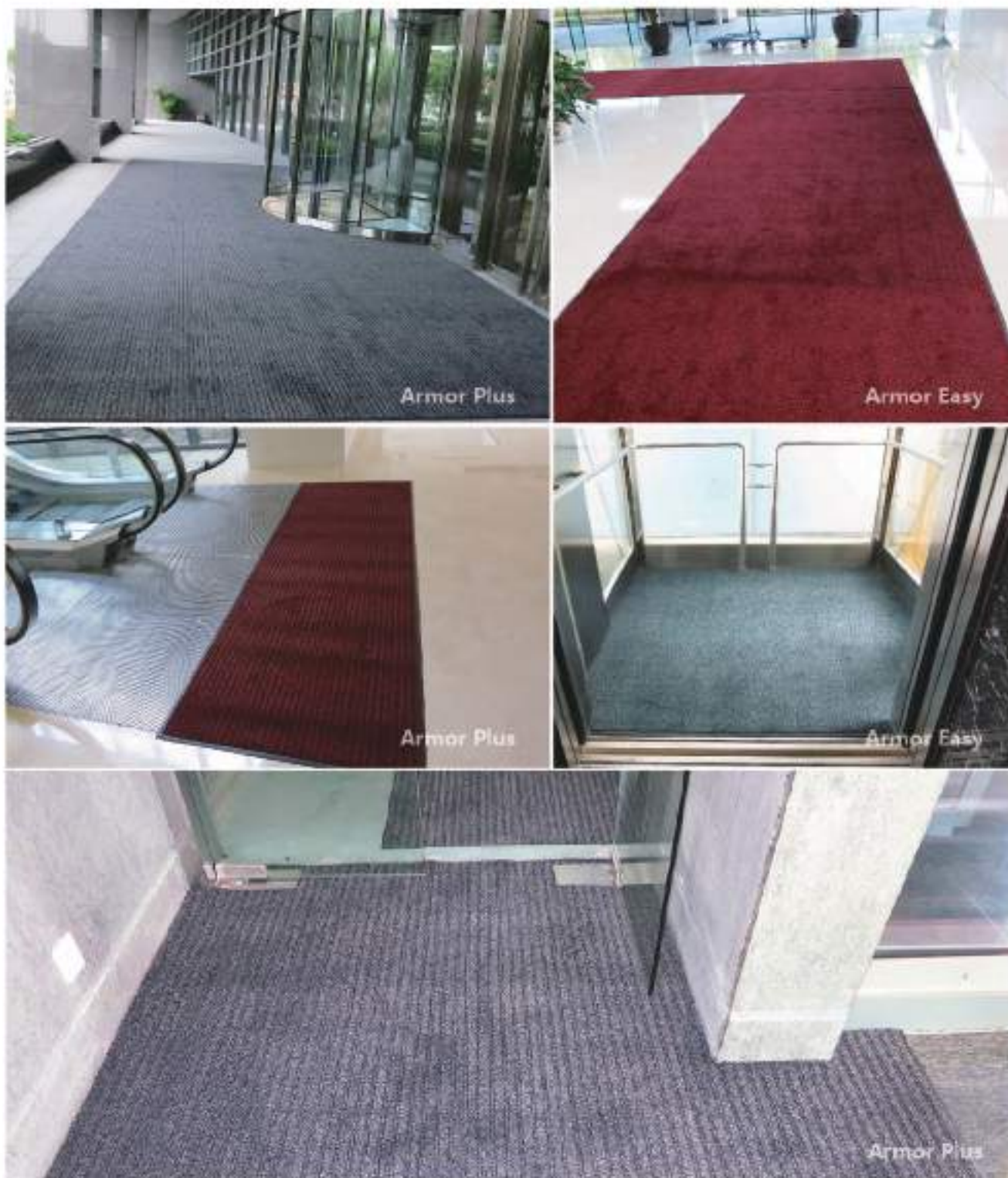


● Charcoal ● Red ● Brown ● Ash ● Blue ● Green



● Charcoal ● Red ● Brown ● Blue

Suitable for laying areas : Outside, Hallway, Aisle, Elevator, Lobby



Armor Easy / Armor Plus

Armor Easy and Armor Plus are high quality entrance mats that provide consumers with an extremely functional and durable mat at a competitive price. Like our Magic Mat, they can hold many times their own weight in moisture and still function effectively.

Features

- Armor Easy/Armor Plus effectively absorb and trap moisture, dirt and grease.
- The specially formulated PVC backing creates a secure slip resistant base that will not let water leak through to your floor.
- Armor Plus also features stiff monofilament bristles which provide superb scraping action to remove loose dirt and debris from shoe soles.
- Armor Easy/Armor Plus have a deep pile, giving it a plush, more cushioned feel.

Applications

- Best suited for placement in transition areas in public buildings, shopping malls, schools, hospitals, entertainment venues, manufacturing plants, commercial kitchens, washrooms, etc., anywhere that foot traffic contamination can be transferred from one area to another.

TECHNICAL SPECIFICATIONS

Armor Easy

Yarn type : Synthetic fiber
Pile construction : High twist and heat set-tufted cut pile
Backing : The bottom of the elastic
Pile height : Approx.8mm
Roll size : 200cm x 1800cm
Indoor air quality testing : Conform to GB 18401-2010 ,
Doesn't contain formaldehyde and decomposable carcinogenic aromatic amine dyes.

Armor Plus

Yarn type : Synthetic fiber&Single fiber
Pile construction : High twist and heat set-tufted cut pile
Backing : The bottom of the elastic
Pile height : Approx.8mm
Roll size : 200cm x 1800cm
Indoor air quality testing : Conform to GB 18401-2010 ,
Doesn't contain formaldehyde and decomposable carcinogenic aromatic amine dyes.



Suitable for laying areas : Hallway, Aisle, Lobby, Elevator



Ribmat 3000

Mat 3000 is our quality ribbed mat that is available in either piece or roll formats and with or without a border. It can be used for all seasons and can be maintained through regular vacuuming and periodic washing with a hose or carpet extractor. Ideally used as a runner, Mat 3000 is your economic alternative for basic floor protection.

Features

- The sturdy triple ribbed design scrapes and traps soil within the recessed grooves while the leak-proof PVC backing protects the floor underneath.
- Mat 3000 is designed for medium to heavy foot traffic and is intended for areas that require additional moisture retention.

Applications

- Best suited for defining pathways and walkways in public buildings, shopping malls, schools, hospitals, entertainment venues, manufacturing plants, commercial kitchens, washrooms, etc.
- It is an excellent indoor mat solution where a durable and economical mat is needed.

TECHNICAL SPECIFICATIONS

Yarn type : Synthetic fiber
 Pile construction : Tufted cut pile in stripes
 Total weight : Approx.3.80kg/m²
 Backing : The bottom of the elastic
 Thickness : Approx.8mm
 Roll size : 120cm x 2500cm/180cm x 2500cm
 Indoor air quality testing : Conform to GB 18401-2010 ,
 Doesn't contain formaldehyde and decomposable carcinogenic aromatic amino dyes



● Graphite ● Red

Suitable for laying areas : Hallway, Aisle, Kitchen, Tea room, Washroom, Elevator



M 4000

M 4000 is a general designed product used for basic floor protection. It is constructed with simple but elegant stripe design. Primarily used for dust control, it protects flooring and provides a safe surface for foot traffic. Ideal for rain and snow, 4000 M helps to maintain clean floors, reducing cleaning costs and the use of unnecessary cleaning resources.

Features

- Quick drying, mildew resistant polypropylene material
- The compound backing keeps liquids from spilling over onto floor preventing possible slips and falls.

Applications

- Best suited for defining pathways and walkways in public buildings, shopping malls, schools, hospitals, entertainment venues, manufacturing plants, commercial kitchens, washrooms, etc.
- It is an excellent indoor mat solution where a durable and economical mat is needed.

TECHNICAL SPECIFICATIONS

Yarn type : Synthetic fiber
 Pile construction : Tufted cut pile in stripes
 Total weight : Approx.3.80kg/m²
 Backing : The bottom of the elastic
 Thickness : Approx.8mm
 Roll size : 120cm x 2500cm/180cm x 2500cm
 Indoor air quality testing : Conform to GB 18401-2010
 Doesn't contain formaldehyde and decomposable carcinogenic aromatic amine dyes



● Graphite ● Red

Suitable for laying areas : Hallway, Aisle, Kitchen, Tea room, Washroom, Elevator



Luxor Mat / VIP Mat

VIP mats is luxurious textile construction mat designed for buildings where prestige and comfort are valued, such as hotels, casinos, restaurants, etc. VIP mat will not only effectively remove the dirt but also protect and prolong the life of expensive floor coverings.

Features

- Proprietary dye to achieve this ultra vibrant color.

Applications

- Best suited for placement in entrances and hallways into where prestige and comfort are valued.

TECHNICAL SPECIFICATIONS

Yarn type (VIP) : Synthetic fiber

Yarn type (Luxor) : Antistatic polyamide 6

Backing : The bottom of the elastic

Roll size (VIP) : 200cm×1800cm

Roll size (Luxor) : 180cm×2000cm

Indoor air quality testing : Conform to GB 18401-2010 ,

Doesn't contain formaldehyde and decomposable carcinogenic aromatic amine dyes



● China Red ● Royal Red

Suitable for laying areas : Hallway, Aisle, Lobby



Logo Mat / Banner Mat

Logo mat and Banner mat is customized mat which can be used to turn your traditional floor mat into unique one. It also can be used in commercial premises and hotels to enhance your corporate image. Logo mat and Banner mat with advertising concepts is very common to see in developed countries.

Features

- Effectively absorbs moisture and dust control.
- 100% NBR rubber resists slipping and can be repeated washing.

TECHNICAL SPECIFICATIONS

Logo Mat

Yarn type : 100% nylon fiber
Pile construction : High twist and heat set combination of mono and multi filaments
Pile construction : Tufted cut pile
Total thickness : Approx.9mm
Total weight : Approx.3.83kg/m²
Backing : The bottom of the elastic/NBR nitrile rubber
Indoor air quality testing : Conform to GB 18401-2010 , Does not contain formaldehyde and decomposable carcinogenic aromatic amine dyes
Color fastness test : GB/T 3921-2008,GB/T 3920-2008, GB/T 8427-2008 , Light fastness : Greater than 6 grade ; Fastness to washing : 4-5grade ; Friction fastness : 4-5grade

Banner Mat

Textile material : Polyester
Backing : Grease proof synthetic rubber
Indoor air quality testing : Conform to GB 18401-2010 , Doesn't contain formaldehyde and decomposable carcinogenic aromatic amine dyes

Maximum can be printed by 16 colors with textured feel



Suitable for laying areas : Hallway, Aisle, Elevator



Magic mats (Residential)

Magic Mats are a superior house floor mats for absorbing dirt, oil and water, capturing dirt and moisture at the door while protecting floors and carpets from costly damage. They help to prevent allergy-causing dust from entering your home. Magic Mats are super absorbent. They'll absorb many times their own weight in moisture and still function effectively. This kitchen absorbent mats are perfect for kitchens. They help prevent cooking grease from the kitchen from spreading into living and dining room areas. Magic mats are machine washable and can be simply hung out to drip dry. This laundry kitchen mats are pre-treated for superior absorbency. The more they are washed, the better they absorb.

TECHNICAL SPECIFICATIONS

Yarn type : Special cotton composite fiber
 Pile construction : Tufted cut pile
 Backing : Compound rubber
 Size : 45 x 67.5cm / 50 x 75cm
 Indoor air quality testing : Conform to GB 18401-2010
 Doesn't contain formaldehyde and decomposable carcinogenic aromatic amine dyes



● Charcoal ● Light brown ○ White

Suitable for laying areas : Indoor, Kitchen, Washroom



Bath Mats

Bath mats absorb moisture, prevent you from slipping on ceramics, stone and other decking, and is perfectly designed for your bathroom and shower. Our anti slip bath mats are designed to fit any of the hotel decoration while providing extra feeling of security by soaking up an incredible amount of water, suds and bubbles. Such absorbent bath mat is soft, comfortable, and conveniently machine washable.

Features

- The Super Sponge Bath Mat adds superior comfort and maximum water absorption to your bathroom floor.

Applications

- Such premium absorbent mat product is especially suitable for hotel and residential use.

TECHNICAL SPECIFICATIONS

Yarn type : Special cotton composite fiber

Pile construction : Tufted cut pile

Backing : Compound rubber

Size : 60 x 90cm

Indoor air quality testing : Conform to GB 18401-2010

Doesn't contain formaldehyde and decomposable carcinogenic aromatic amine dyes



☐ White

Suitable for laying areas : Hallway, Aisle, Kitchen, Tea room, Washroom, Elevator



Urinal Mat

Our Washroom mat is a disposable place mat that effectively absorbs moisture and deodorizes interior areas. Designed to provide a convenient solution to washroom safety and floor protection, it's engineered to be a cost effective, disposable alternative to costly, labor intensive, maintenance.

Features

- 100% NBR rubber resists slipping and effectively protects washroom flooring.
- Anti-bacterial, anti-microbial polyester fiber.
- Highly absorbent surface to catch and hold moisture prevalent around sinks, hand dryers, paper towel dispensers and urinals.
- Protect flooring around urinals from staining and the harmful effects of uric acid.
- Helps to control odours and assists in reducing transfer of contamination to other areas of your facility.
- Available in two standard sizes as well as bulk rolls.
- A convenient solution to manage floor safety and rising maintenance costs.

Applications

- Best suited for public, commercial and industrial washroom environments where constant/frequent cleaning is not feasible

TECHNICAL SPECIFICATIONS

Textile material : Anti-bacterial treated polyester

Backing : Grease proof synthetic rubber

Size : 40cm x 50cm

Indoor air quality testing : Conform to GB 18401-2010

Doesn't contain formaldehyde and decomposable carcinogenic aromatic amine dyes



● Charcoal ● Brown

Suitable for laying areas : Washroom



Anti Fatigue Mats

Our Anti-fatigue mat is designed and engineered for maximum comfort and safety. Its resilient solid rubber construction is built tough to withstand the rigors of daily use. It comes standard with molded beveled edges and is easy to maintain by periodic washing with a hose or pressure washer. Our Anti-fatigue mat is also available in fiber coated colors by special order.

Features

- Made from durable, 100% NBR rubber, it provides superior resistance to water, oil, grease, chemicals and animal fats.
- The smooth bubble structure of our Anti-fatigue mat acts to reduce the effects of worker fatigue by promoting gentle leg movement. This movement, although subtle, is enough to reduce some health risks associated with extended periods of standing.
- The anti-slip, anti-bacterial characteristics of the solid rubber construction, provides a comfortable, safe work surface that can also provide an effective insulating barrier from cold floors.

Applications

- Anti-fatigue mats are an effective tool to reduce worker fatigue that has been associated with poor worker concentration, higher possibility of accidents, and lower productivity levels.
- Ideal for both commercial and industrial environments, our Anti-fatigue mat is an excellent solution where a durable and ergonomic mat is required.

TECHNICAL SPECIFICATIONS

Material : Rubber

Weight : Approx.12.7mm

Standard : 2'x3'(60cmx90cm)/3'x5'(90cmx150cm)

Functional : 2'x3'(60cmx90cm)/3'x5'(90cmx150cm)

Indoor air quality testing : Conform to GB 18401-2010 ,

Does not contain formaldehyde and decomposable

carcinogenic aromatic amine dyes

Oil resistant test : In the condition of 60°C, soaked in IRM903

oil in 72 hours, No fade, no deformation

Textile material : Polyester

Backing : Rubber

Thickness : Approx.9.4mm

Weight : Approx.2.4kg/pc

Size : 60cmx90cm

Indoor air quality testing : Conform to GB 18401-2010 ,

Does not contain formaldehyde and decomposable

carcinogenic aromatic amine dyes



● Black

● Green

● Red

● Brown

Suitable for laying areas : Production line, Checkstand, Shipping department, Site welding



Hex Guard

Grease resistant, solid rubber compound and beveled edges create a non-trip, non-slip work environment. Open construction allows solids and liquids to pass through, while leaving a clean, dry surface. They are anti-slip, anti-fatigue, wear-resistant, and anti-bacterial. They also provide a comfortable surface to relieve worker fatigue. It is ideal for commercial kitchens, as well as industrial applications.

Features

- Made from durable, 100% NBR rubber, it provides superior resistance to water, oil, grease, chemicals and animal fats.
- Open channel structure, combined with recessed grooves, allows solids and liquids to easily fall through mat, leaving a clean, dry surface.
- Designed for heavy industrial and commercial environments where anti-fatigue and superior drainage capabilities are required.

Application

- Defense against slippery floors in commercial kitchens, food processing facilities, cafeterias, manufacturing facilities, bars, hospitals, etc.
- It is an excellent heavy-duty mat solution where a durable, non-slip mat is required.

TECHNICAL SPECIFICATIONS

Material : NBR Senior nitrile rubber

Thickness : 14.5mm Weight : Approx.14.5kg/pc Size : 3'x5'(90cmx150cm)

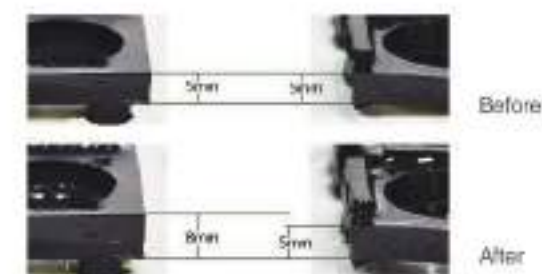
Indoor air quality testing : Conform to GB 18401-2010

Does not contain formaldehyde and decomposable carcinogenic aromatic amine dyes

Oil resistant test : In the condition of 60°C, soaked in IRM903 oil in 72 hours, No fade, no deformation



A-Rubber mat
B-Hex Guard



● Black ● Red

Suitable for laying areas : Kitchen, Workshop, Work station, Aisle



Slip Guard

Slip Guard is our premium grade safety matting. Designed to be used primarily in industrial and commercial environments, its built tough to withstand the rigors of daily use. The mat's resilient rubber construction acts to reduce the effects of worker fatigue while providing a safe high traction surface to stand on. It comes standard with molded beveled edges or with an optional interlocking design for extended run lengths. Maintenance is easy through periodic washing with a hose or pressure washer.

Features

- Provides superior resistance to water, oil, grease, chemicals and animal fats.
- Open channel structure, combined with recessed grooves, allows solids and liquids to easily fall through mat, leaving a clean dry surface.
- Designed for heavy industrial and commercial environments where anti-fatigue and superior drainage capabilities are required.

Applications

- Slip Guard provides 24/7 defense against slippery floors in commercial kitchens, food processing facilities, cafeterias, manufacturing facilities, bars, hospitals, etc.
- It is an excellent heavy-duty mat solution where a durable, non-slip mat is required.

TECHNICAL SPECIFICATIONS

Material : Grease proof synthetic rubber

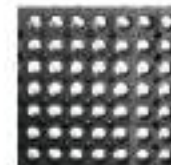
Thickness : 1/2" (1.27cm)

Size A : 2' x 3' (60cm x 90cm)

Size B : 3' x 5' (90cm x 150cm)

Fire resistance : GB 8624-2012, GB/T 11785-2005, GB/T 8626-2007, B1

Grease Resistance : ASTM D412 6a ASTM D1054-2002 (2007)



● Black

Suitable for laying areas : Kitchen, Workshop, Work station, Aisle